

萊英家

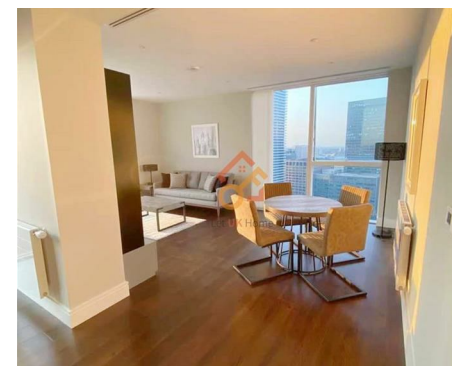
Let **UK** Home

2 Bedrooms

Flat

Located in London

£3,800 Per Month



[info@letukhome.co.uk](mailto:info@letukhome.co.uk)

<https://www.letukhome.co.uk/>

02045348146



# 2701, Maine Tower, 9 Harbour Way

London | | E14 9DN



Let UK Home are excited to offer this spectacular two bedroom apartment in the heart of Maine Tower part of the Harbour Central.

This property comprises a large bright open plan kitchen and living room with great views, two double bedrooms with fitted wardrobes (master en-suite), a large family sized bathroom and ample storage.

The apartment is equipped with communal courtyards and fountains. Residents can enjoy fitness and entertainment facilities including spa, gym, pilates room, private cinema and 24h concierge service.

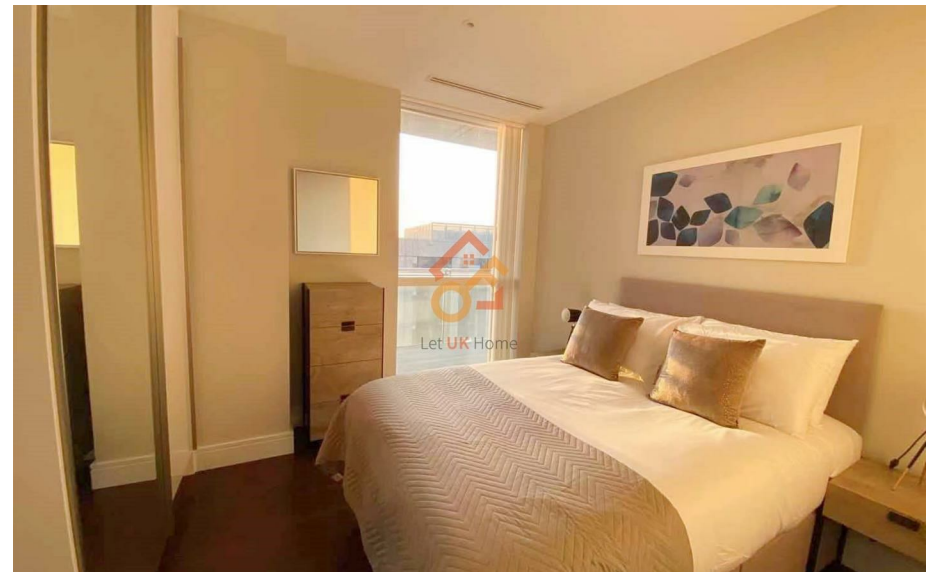
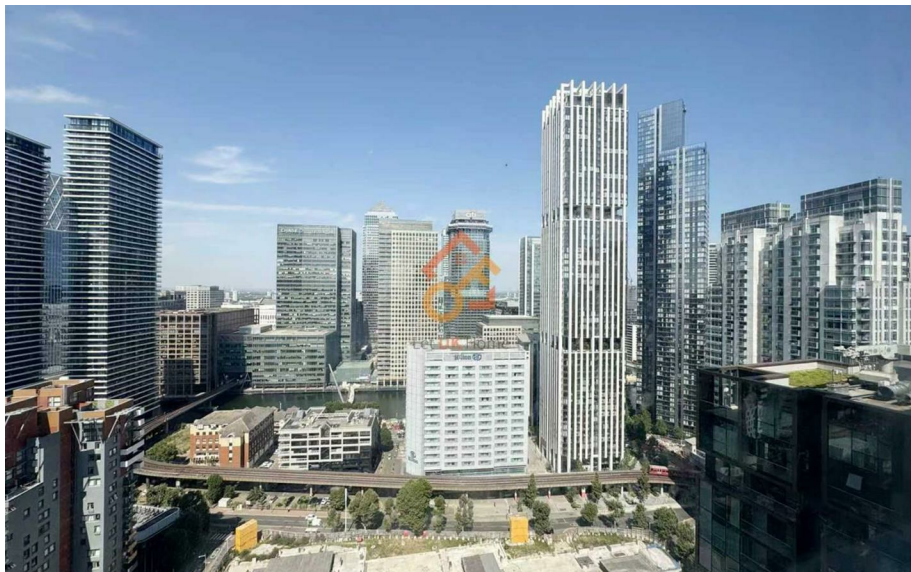
The apartment is within walking distance of the DLR station, making it easy to reach important stations such as Canary Wharf Underground Station and the City of London. From Canary Wharf Station, you can take the Jubilee subway line to quickly reach various areas in London.

# 2701, Maine Tower, 9 Harbour Way

£3,800 Per Month



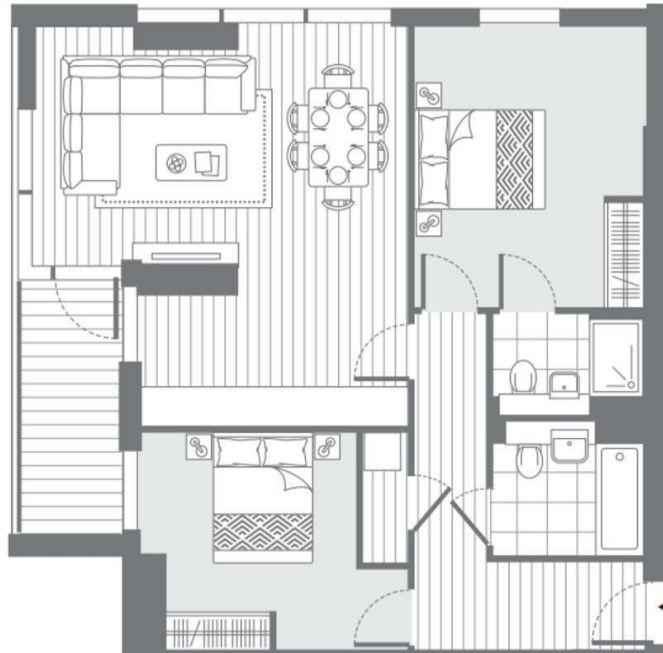
- 27th Floor
- 24h Security
- The Spa
- Residents Lounge
- Treatment Room
- Concierge Service
- The Gym
- Cinema & Game Room
- Sauna & Steam Room
- Private Terrace



2 bed apartment

Total area

77.7 sq.m. 836 sq.ft.



萊英家

Let **UK** Home

6/F Two Kingdom Street

London

W2 6BD

02045348146

info@letukhome.co.uk

**Council Tax Band: F**

**Local Authority:**

Agents Note: Whilst every care has been taken to prepare these particulars, they are for guidance purposes only. All measurements are approximate and are for general guidance purposes only and whilst every care has been taken to ensure their accuracy, they should not be relied upon and potential buyers/tenants are advised to recheck the measurements.

| Energy Efficiency Rating                    |         |                         |
|---|---------|-------------------------|
|   | Current | Potential               |
| Very energy efficient - lower running costs |         |                         |
| (92 plus) A                                 |         |                         |
| (81-91) B                                   | 85      | 85                      |
| (69-80) C                                   |         |                         |
| (55-68) D                                   |         |                         |
| (39-54) E                                   |         |                         |
| (21-38) F                                   |         |                         |
| (1-20) G                                    |         |                         |
| Not energy efficient - higher running costs |         |                         |
| England & Wales                             |         | EU Directive 2002/91/EC |

<https://www.letukhome.co.uk/>